

Brassica cytogenetics

UNIVERSITY OF
BIRMINGHAM

Sue Armstrong

Retired

Elaine Howell

Gareth Jones

Steve Price

Mike Kearsey

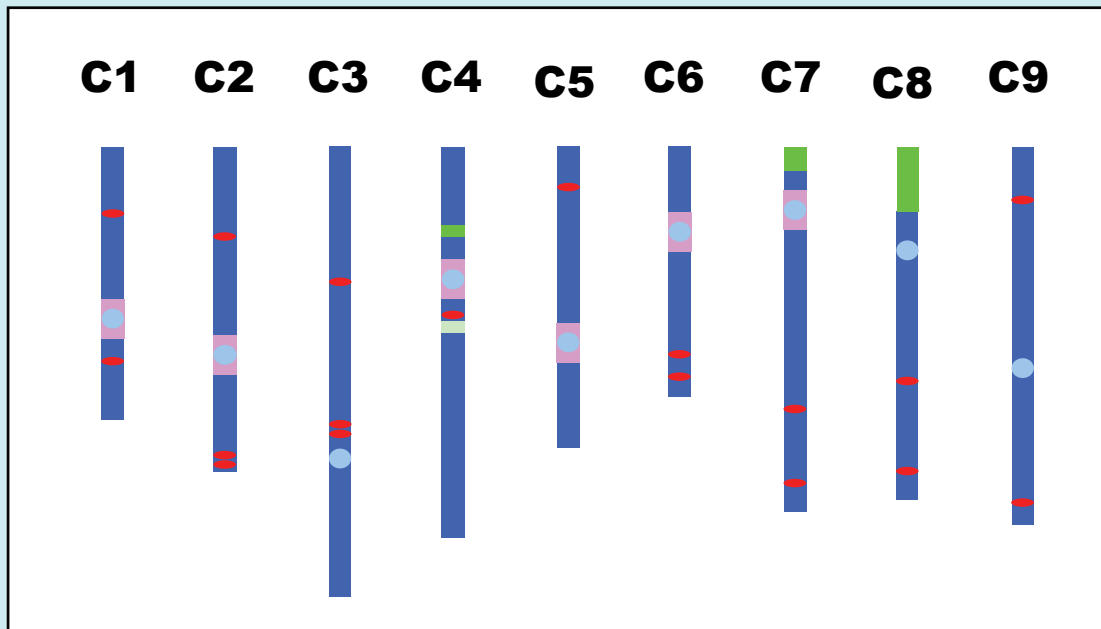
Graham King

Many at Warwick HRI

D. Lydiate, I. Parkin, A. Sharpe, AAFC

Brassica oleracea - C genome

Linked cytogenetic to genetic map



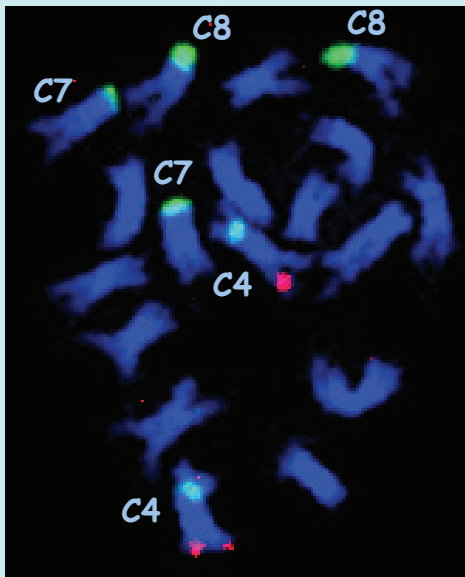
FISH - probes
mainly BACs with
genetically
mapped sequences

- mapped markers (BACs)
- pericentromeric heterochromatin
- 45S rDNA
- 5S rDNA
- centromere position

Brassica oleracea - C genome

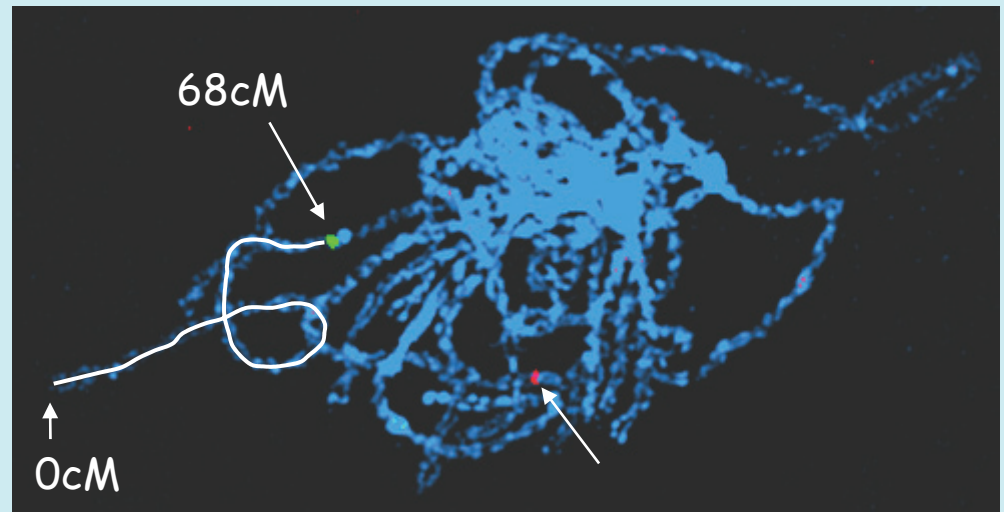
Use the cytogenetic map to determine the LG of a BAC

Mitotic metaphase



BAC (red) assigned to C4
45SrDNA (green)

Pachytene

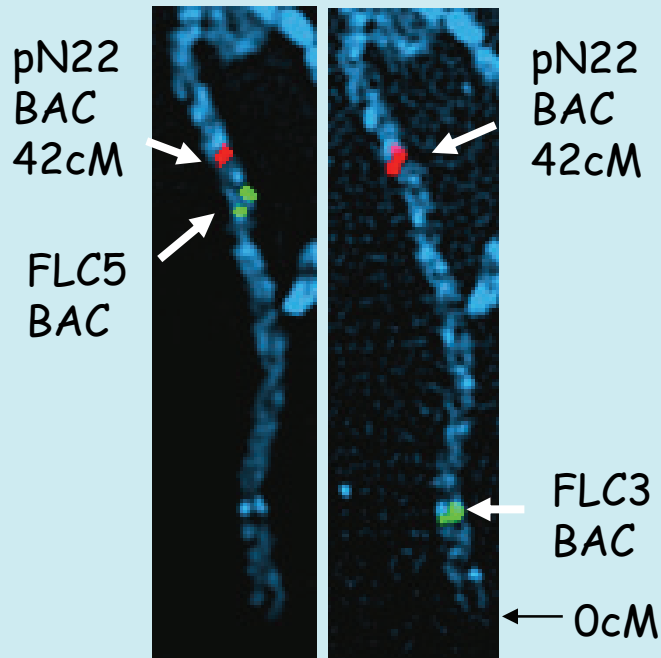


Green BAC on C3 (139cM)
Red BAC not at same location

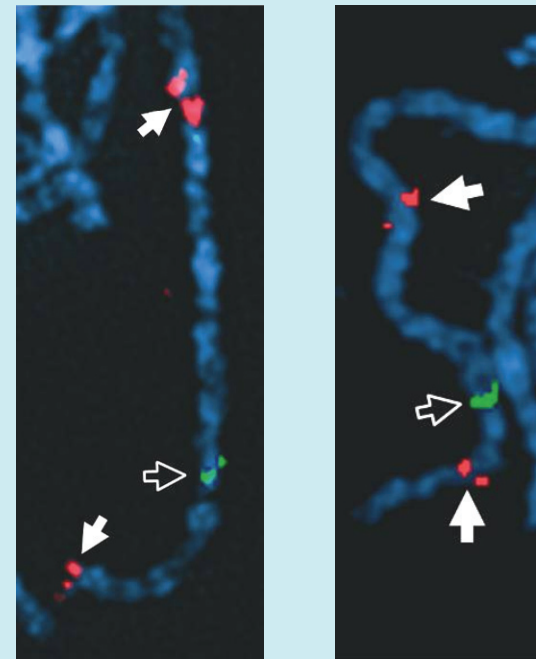
Brassica oleracea - C genome

BACs are site specific

Inverted duplication on C6



FLC BACs on C3

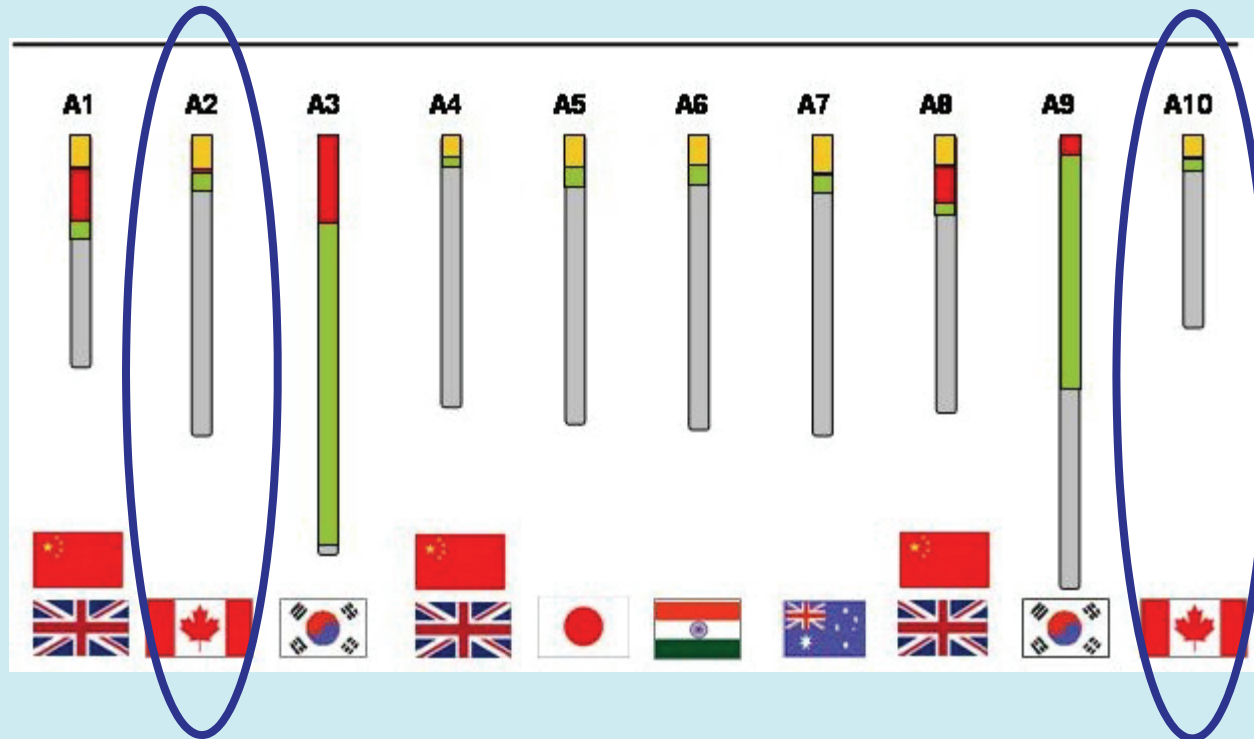





Arabidopsis BAC with
Brassica BAC as marker

(Genome 2005)

Brassica rapa - A genome

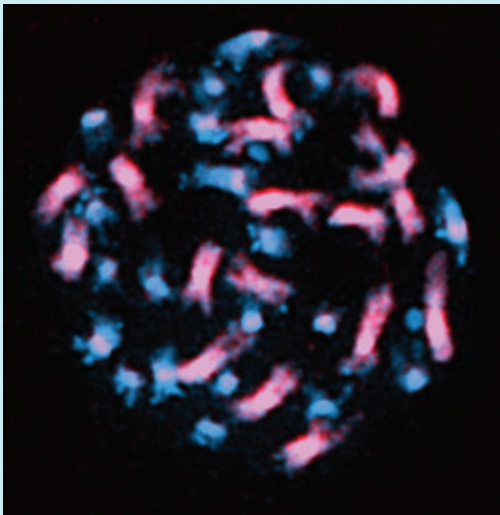
Checking some A2 and A10 BACs for AAFC Canada



-  seed BAC in GenBank (Korea)
-  BAC sequences in GenBank
-  BAC sequences completed, not yet available in GenBank

Brassica napus - A and C

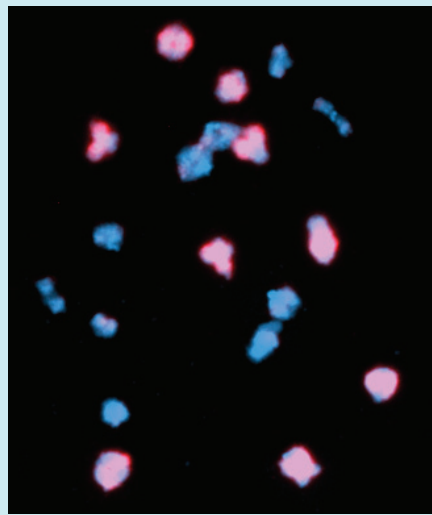
GISH - C genome chromosomes red



Mitotic metaphase

18 C red

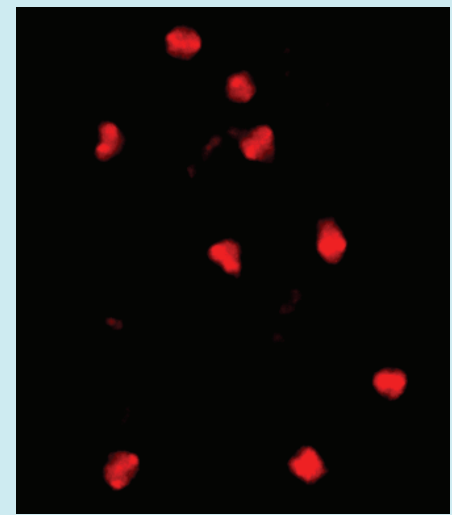
20 A blue



Diakinesis

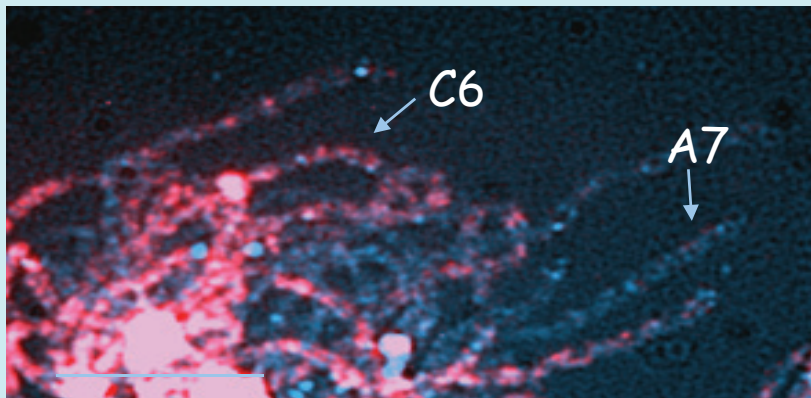
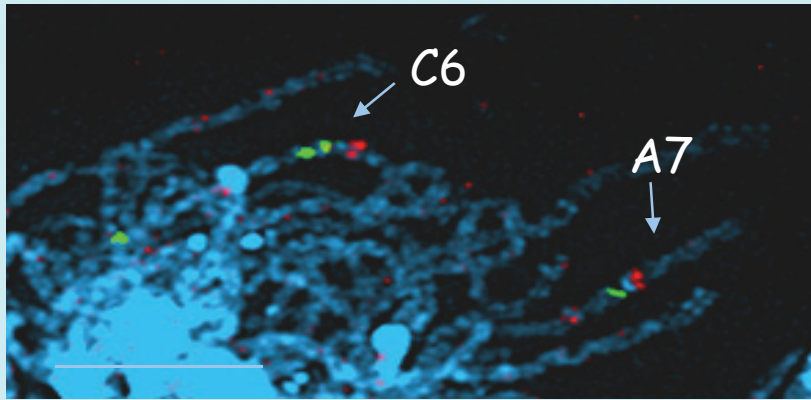
9 C bivalents red

10 A bivalents blue



Brassica napus - A and C

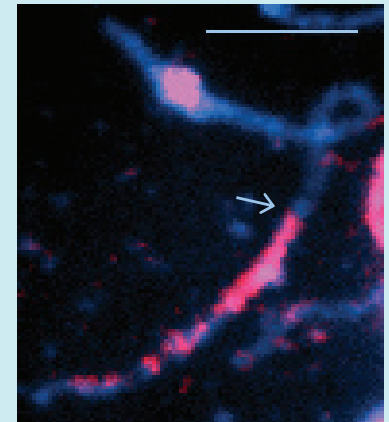
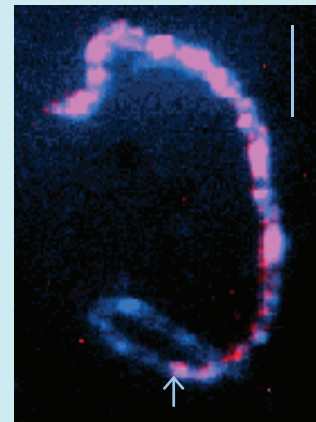
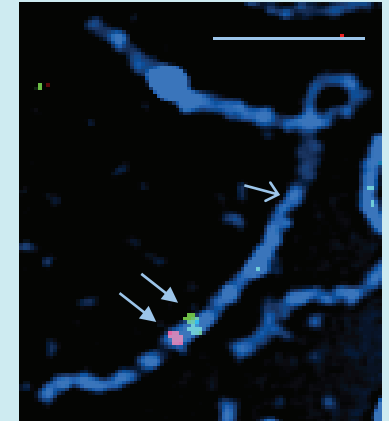
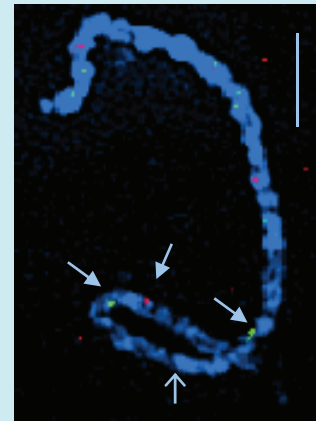
BolC6 BACs - on BnaC6 and fainter on homoeologous segment of BnaA7



Westar - reciprocal translocation

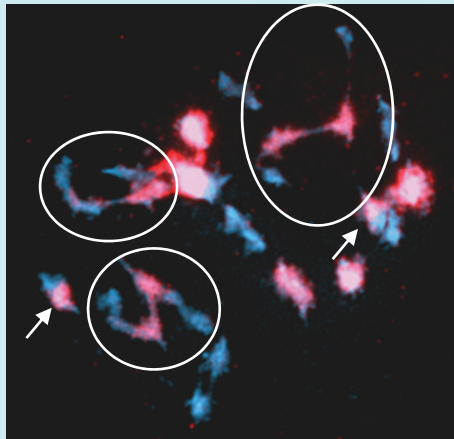
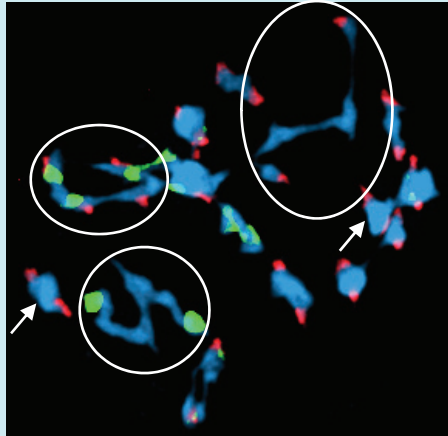
C6 (A7)

A7 (C6)



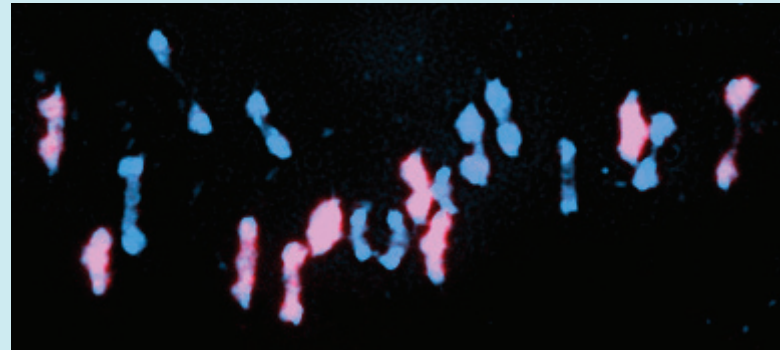
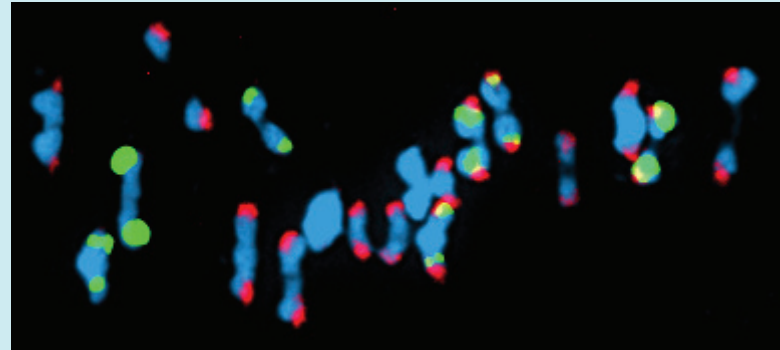
Brassica napus - pairing

Synthetic napus



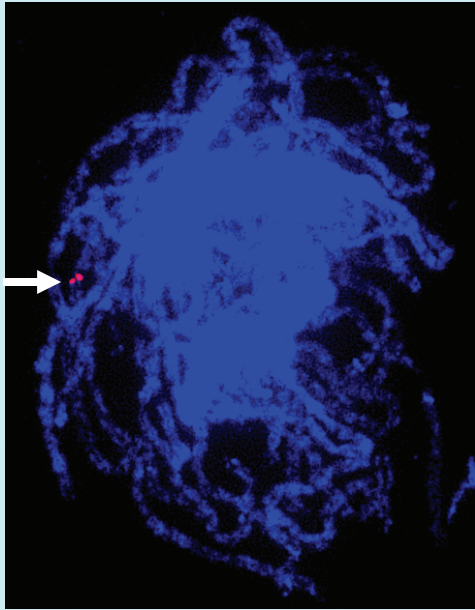
3 ACCA quadrivalents
2 AC bivalents

Normal napus



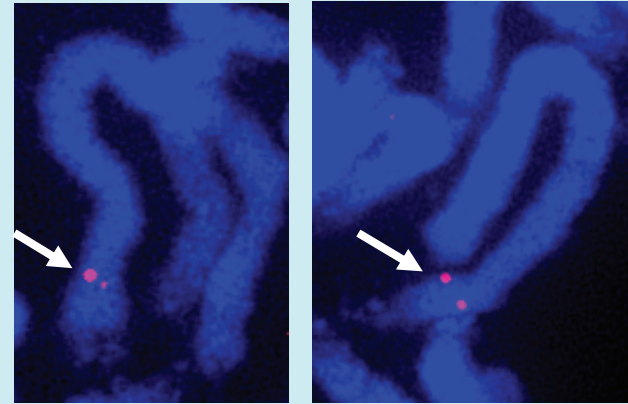
19 bivalents
10 AA and 9 CC

Brassica napus and *Silene*



This *B. napus* BAC is
site specific

~ 100kb



Silene latifolia IL25
Y chromosome

5kb genic probe