



# Mapping Resources and DFFSs

Graham Teakle  
Warwick HRI



THE UNIVERSITY OF  
WARWICK



# Availability of mapping populations

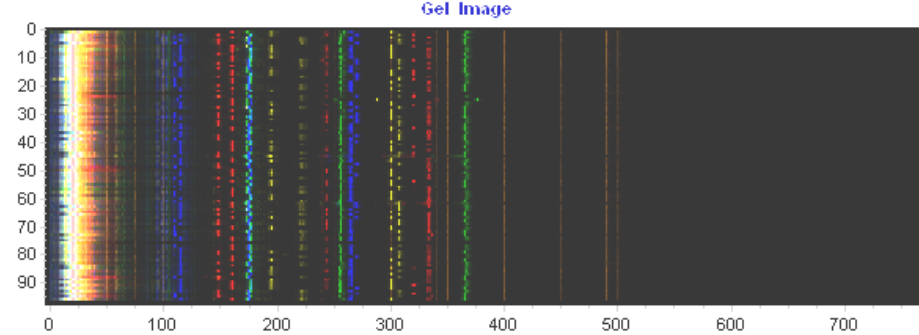
Focus on public domain self compatible populations

Population	Species	No. lines	Availability of lines	Availability of DNA	Map status
AGDH	<i>B. oleracea</i>	~130	~90	Y	Published, being revised
AGSL	<i>B. oleracea</i>	67	66	Y	Published, being revised
TBDH	<i>B. oleracea</i>	151	146	Soon	Unpublished
TNDH	<i>B. napus</i>	188	188	Y	Published
TVSL	<i>B. napus</i>	75	75	Soon	Partial
DYDH	<i>B. napus</i>	120	119 Renogotiate MTA	Soon	Published
CKDH	<i>B. rapa</i>	78	Enquire	Y	Published

Cost of replacement fee and MTA



# Markers and mapping



- Screened approx. 100 SSRs on panel of parent lines
- Polymorphic SSRs mapped in AGDH, NGDH and AGSL maps
- We are working on a paper updating these maps
- These markers screened on BolDFFS
- Future work will further integrate TNDH & DYDH maps with the above maps (AdVaB)
- More detailed characterisation proposed for TVSL map (OREGIN)

# Progress with DFFSs

## BoDFFS

376 founder lines

- Current focus on 188 lines
- Last microspore attempts this year
- Remainder by SSD

	No. lines
Fixed lines	70
Lines at S2	12
Lines at S1	49



## BnaDFFS

188 founder lines

- Now being fixed by SSD
- Breeders to assist with this

	No. lines	No. available
Fixed lines	63	62
Lines at S4	1	1
Lines at S3	5	4
Lines at S2	103	78
Lines at S1	16	16



# PCO analysis of 96 BoIDFS lines with 21 SSRs

PCO scatter diagram, Jaccard similarity index

