

**UK-BRC Meeting
Warwick HRI 21 May 2008**

Biofortifying *Brassica* with calcium and magnesium



The University of
Nottingham



ROTHAMSTED
RESEARCH



Shoot Calcium and Magnesium Concentrations Differ between Subtaxa, Are Highly Heritable, and Associate with Potentially Pleiotropic Loci in *Brassica oleracea*^{1[W][OA]}

Martin R. Broadley*, John P. Hammond, Graham J. King, Dave Astley, Helen C. Bowen, Mark C. Meacham, Andrew Mead, David A.C. Pink, Graham R. Teakle, Rory M. Hayden, William P. Spracklen, and Philip J. White

Plant Sciences Division, University of Nottingham, Sutton Bonington Campus, Loughborough, Leicestershire LE12 5RD, United Kingdom (M.R.B., M.C.M.); Warwick HRI, University of Warwick, Wellesbourne, Warwick CV35 9EF, United Kingdom (J.P.H., D.A., H.C.B., A.M., D.A.C.P., G.R.T., R.M.H., W.P.S.); Rothamsted Research, Harpenden, Hertfordshire AL5 2JQ, United Kingdom (G.J.K.); and The Scottish Crop Research Institute, Invergowrie, Dundee DD2 5DA, United Kingdom (P.J.W.)

Plant Physiology, April 2008, Vol. 146, pp. 1707–1720, www.plantphysiol.org © 2008 American Society of Plant Biologists

Shoot calcium and magnesium concentrations differ between subtaxa, are highly heritable, and associate with potentially pleiotropic loci in *Brassica oleracea*

¹Broadley MR, ²Hammond JP, ³King GJ, ²Astley D, ²Bowen HC, ¹Meacham MC, ²Mead A, ²Pink DAC, ²Teakle GR, ²Hayden RM, ²Spracklen WP, ⁴White PJ

¹Plant Sciences Division, University of Nottingham, Sutton Bonington Campus, Loughborough, Leicestershire, LE12 5RD, UK

²Warwick HRI, University of Warwick, Wellesbourne, Warwick CV35 9EF, UK

³Rothamsted Research, Harpenden, Hertfordshire, AL5 2JQ, UK

⁴The Scottish Crop Research Institute, Invergowrie, Dundee, DD2 5DA, UK



The University of
Nottingham



Vegetable *Brassica* are Ca/Mg biofortification targets: dietary, evolutionary and genetic reasons

Low Ca intake: osteoporosis, rickets (Vit. D metabolism) etc.

Low Mg intake: hypertension, heart dysfunction, diabetes, preeclampsia

>30% globally deficient in dietary Ca or Mg

Probably more: soft-tissue biomarkers of Ca/Mg status are unreliable

**Dietary Ca/Mg deficiencies cannot be met sustainably through meat / dairy
or supplements in many groups**

Vegetable *Brassica* are Ca/Mg biofortification targets: dietary, evolutionary and genetic reasons

Table 1. Essential mineral elements required by humans^a

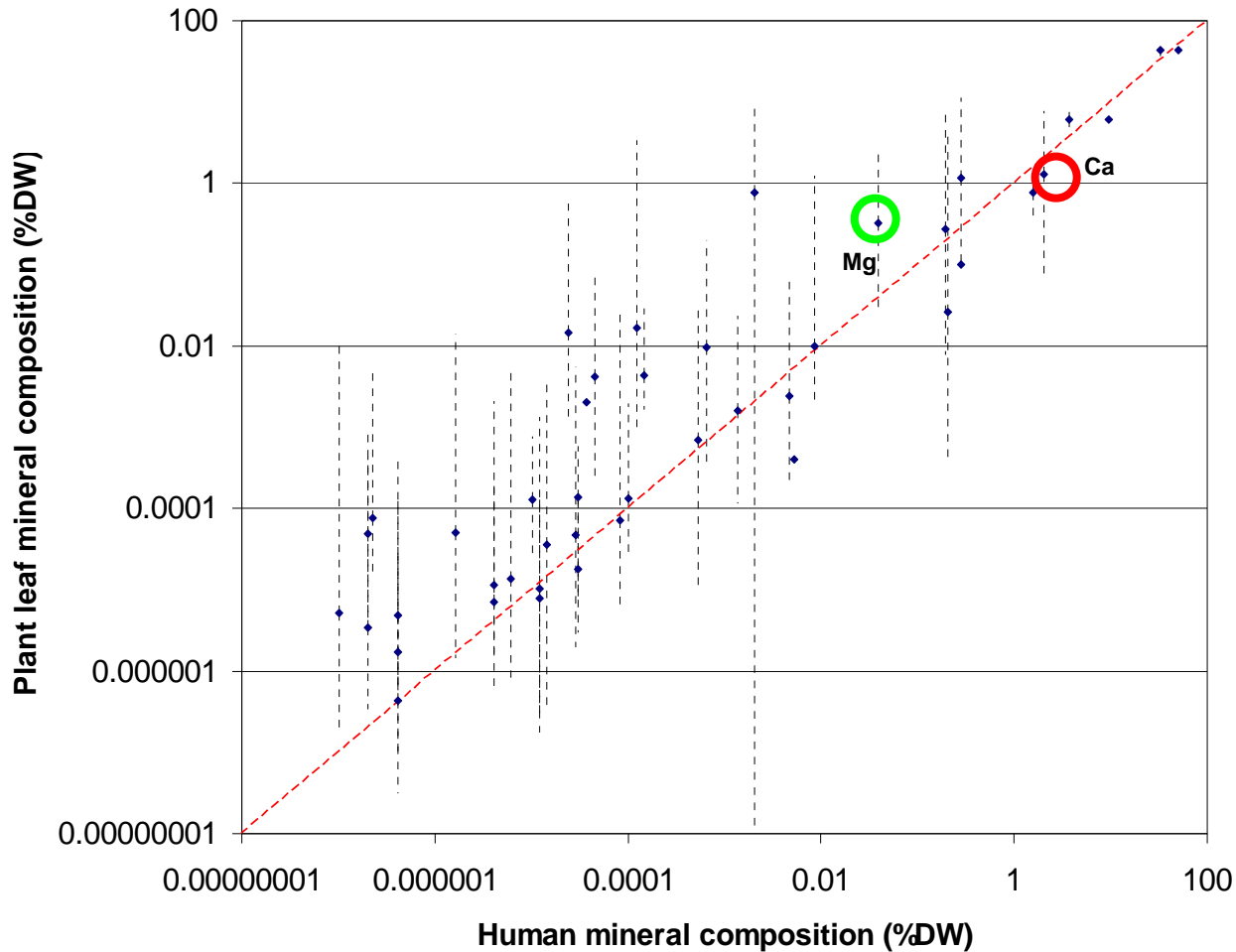
Element	RDA	RNI	UL	SUL	Antinutrients	Promoters
N	NS	NS	NS	NS		
S	NS	NS	NS	NS		
K (mg)	1600–3500	3500	NS	3700 ^b		
Cl (mg)	750–3400	2500	NS	NS		
Ca (mg)	1000–1200	700	2500	1500 ^b	Oxalate, phytate, tannins, fiber	Inuline
P (mg)	700	550	4000	250 ^b		
Na (mg)	500–2400	1600	<2400	NS		
Mg (mg)	310–420	300	350 ^b	400 ^b	Phytate	
Fe (mg)	8.0–18.0	11.4	45.0	17.0 ^b	Phytate, tannins, oxalate, fiber, hemagglutinins	Phytoferritin, riboflavin, ascorbate, β-carotene, cysteine, histidine, lysine, fumarate, malate, citrate
Zn (mg)	8.0–11.0	9.5	40.0	25.0 ^b	Phytate, tannins, fiber, hemagglutinins	Palmitic acid, riboflavin, ascorbate, cysteine, histidine, lysine, methionine, fumarate, malate, citrate
Mn (mg)	1.8–2.3	> 1.4	11.0	4.0 ^b		
Cu (mg)	0.9	1.2	10.0	10.0		
I (μg)	150	140	1100	500 ^b	Goitrogens	Selenium
Se (μg)	55	75	400	450		
Mo (μg)	45	50–400	2000	NS		
Cr (μg)	25–35	> 25	NS	NS		
F (mg)	3–4	NS	10	NS		
B (mg)	NS	NS	20.0	9.6		
Ni (μg)	NS	NS	1000	260		
V (mg)	NS	NS	1.8	NS		
Si (mg)	NS	NS	NS	1500		
As	NS	NS	NS	NS		

Abbreviations: NS, none specified.

^aThe US recommended daily allowances (RDA, or adequate intakes), the UK guidance daily reference nutrient intakes (RNI), the US tolerable upper intake levels (UL), and the UK guidance safe upper levels (SUL) for adults (<http://www.food.gov.uk/multimedia/pdfs/vitamin2003.pdf>, [96]). The required amounts of N and S can be obtained if the recommended daily protein intake is achieved.

^bNon-food.

Vegetable *Brassica* are Ca/Mg biofortification targets: dietary, evolutionary and genetic reasons



Sources:

Broadley MR, Bowen HC, Cotterill HL, Hammond JP, Meacham MC, Mead A, White PJ. (2004). Phylogenetic variation in the shoot mineral concentration of angiosperms. *Journal of Experimental Botany*, 55, 321-336.

Emsley J. (1998). *The elements*, 3rd ed. Oxford, UK: Clarendon Press

Epstein E. (1972). *Mineral nutrition of plants: principles and perspectives*. New York, USA: John Wiley and Sons, Inc.

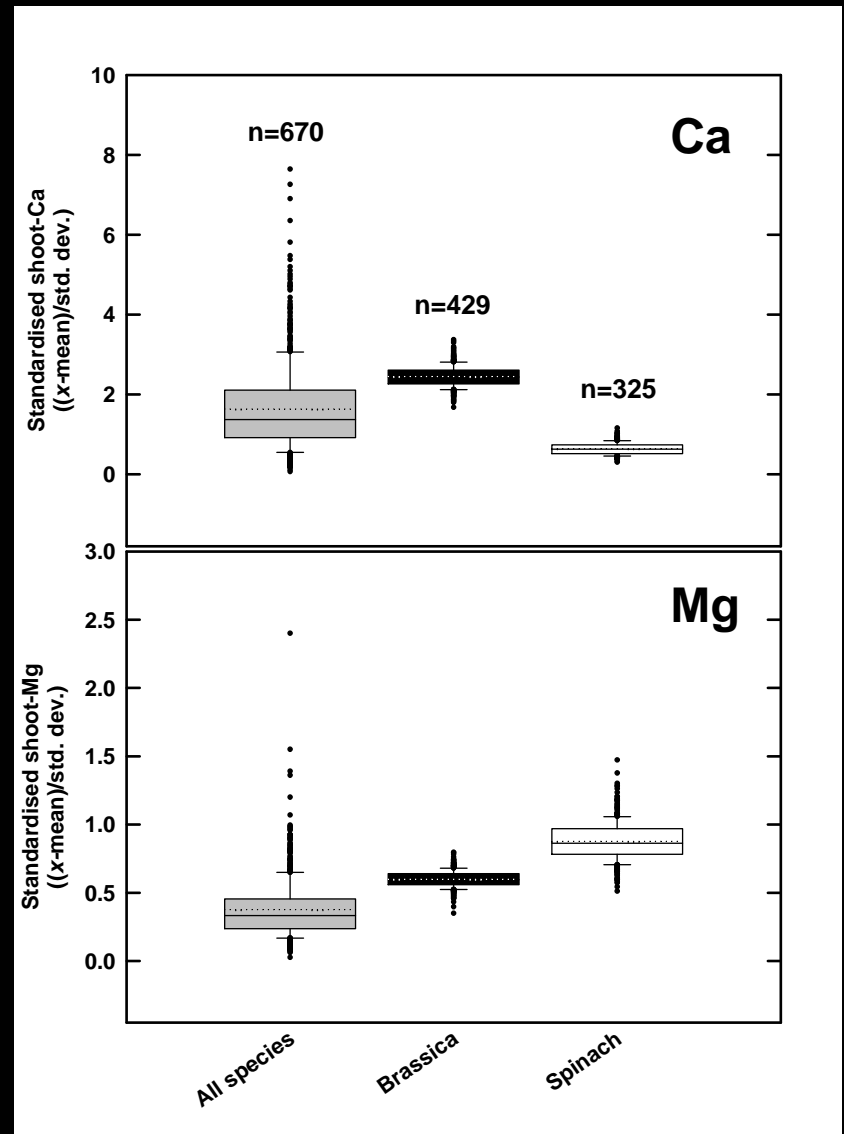
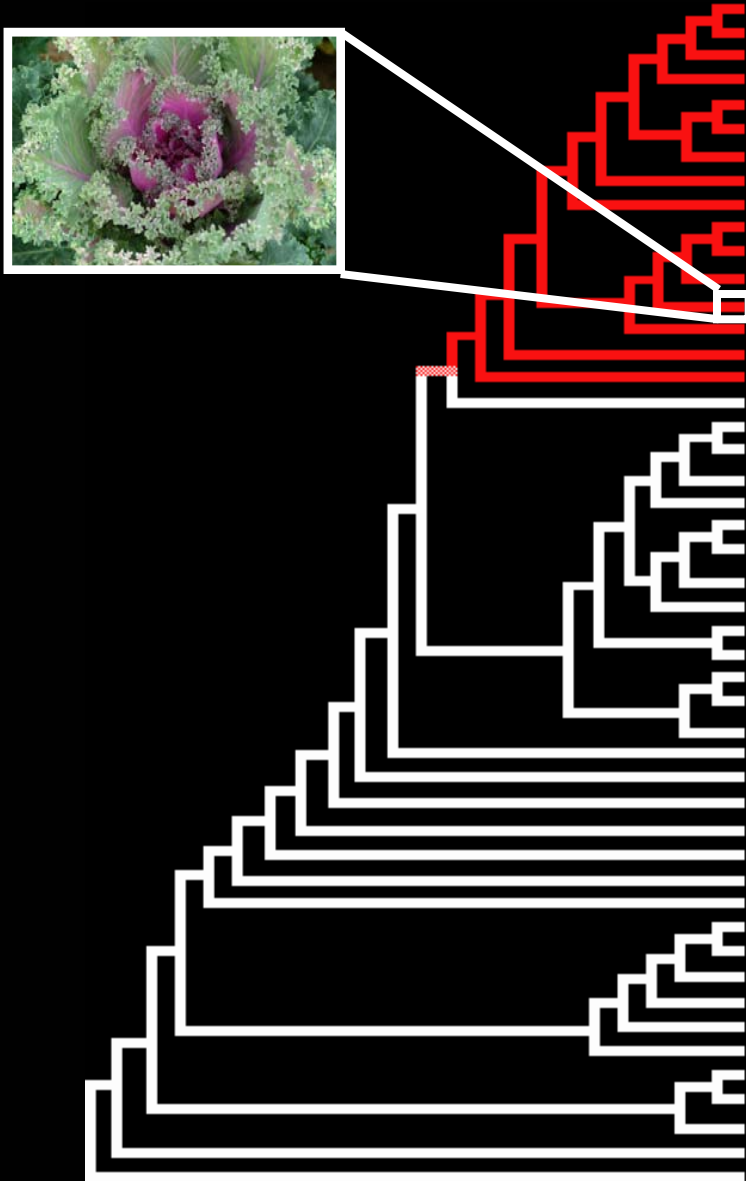
Hodson MJ, White PJ, Mead A, Broadley MR. (2005). Phylogenetic variation in the silicon composition of plants. *Annals of Botany*, 96, 1027-1046.

Kay CE, Tourangeau PC, Gordon CC. (1975). Fluoride levels in indigenous animals and plants collected from uncontaminated ecosystems. *Fluoride*, 8, 125-133.

Marschner H. (1995). *Mineral Nutrition of Higher Plants, 2nd Edition*. Academic Press, London, UK.

Watanabe T, Broadley MR, Jansen S, White PJ, Takada J, Satake K, Takamatsu T, Jaya Tuah S, Osaki M. (2007). Evolutionary control of leaf element composition in plants. *New Phytologist*, 174, 516-523.

Vegetable *Brassica* are Ca/Mg biofortification targets: dietary, evolutionary and genetic reasons



Vegetable *Brassica* are Ca/Mg biofortification targets: dietary, evolutionary and genetic reasons

Brassica high Ca/Mg in shoot

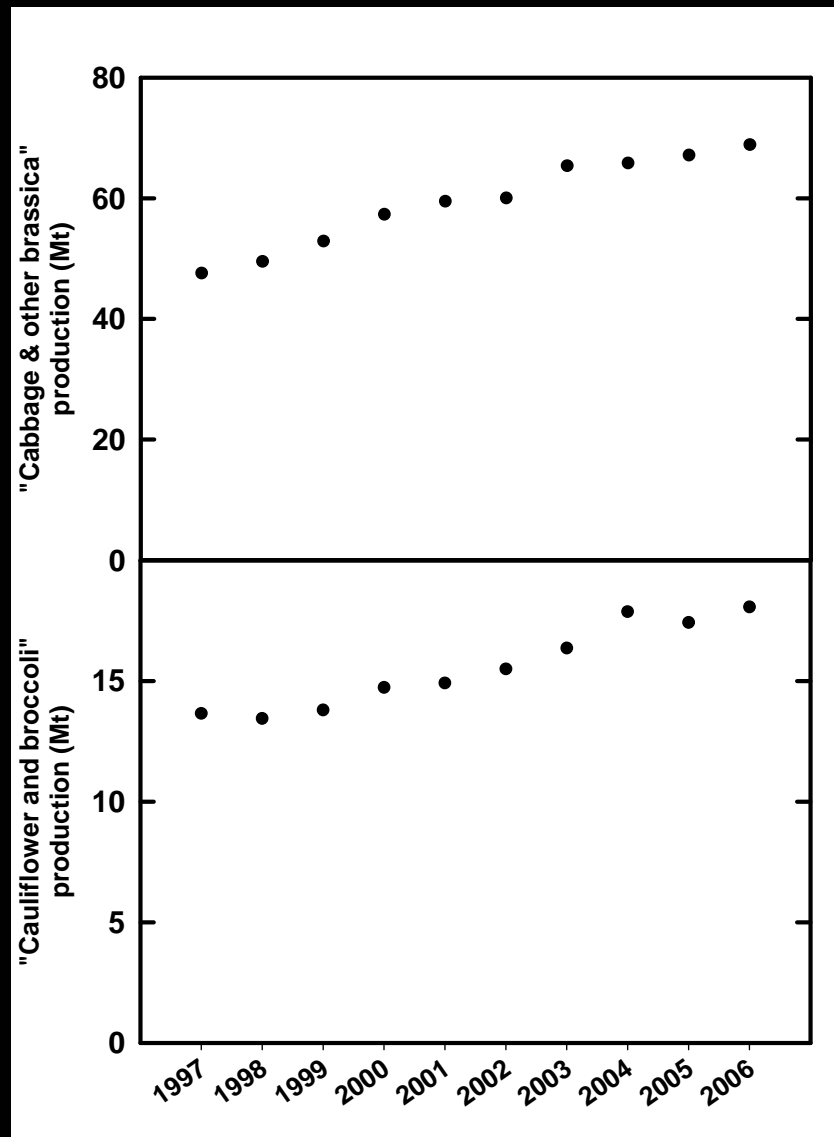
Brassica low oxalate/phytate in shoot

Brassica most widely eaten “leaf” ?

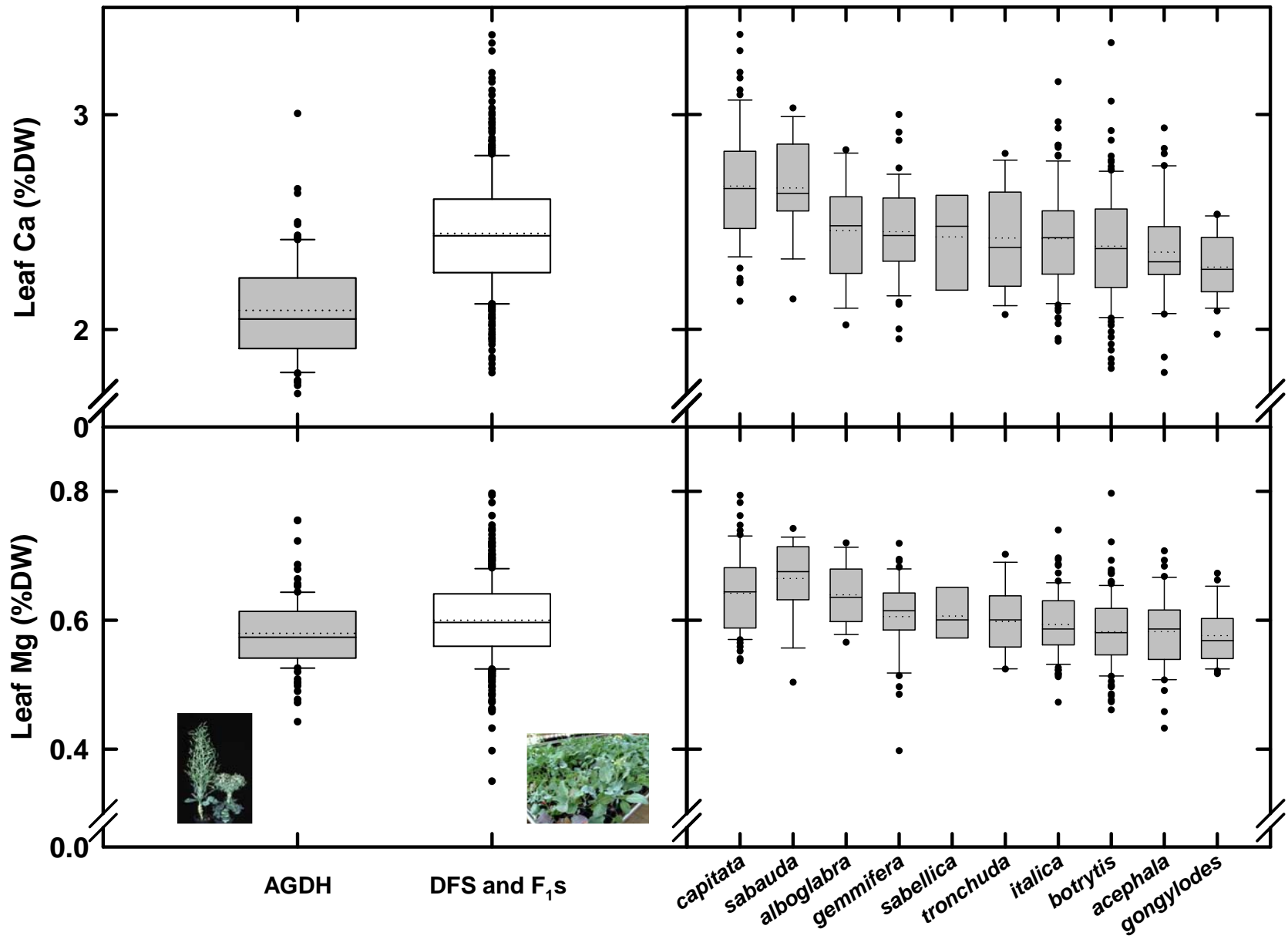
2006 production:

68.9 Mt yr⁻¹ “cabbages and other brassica”

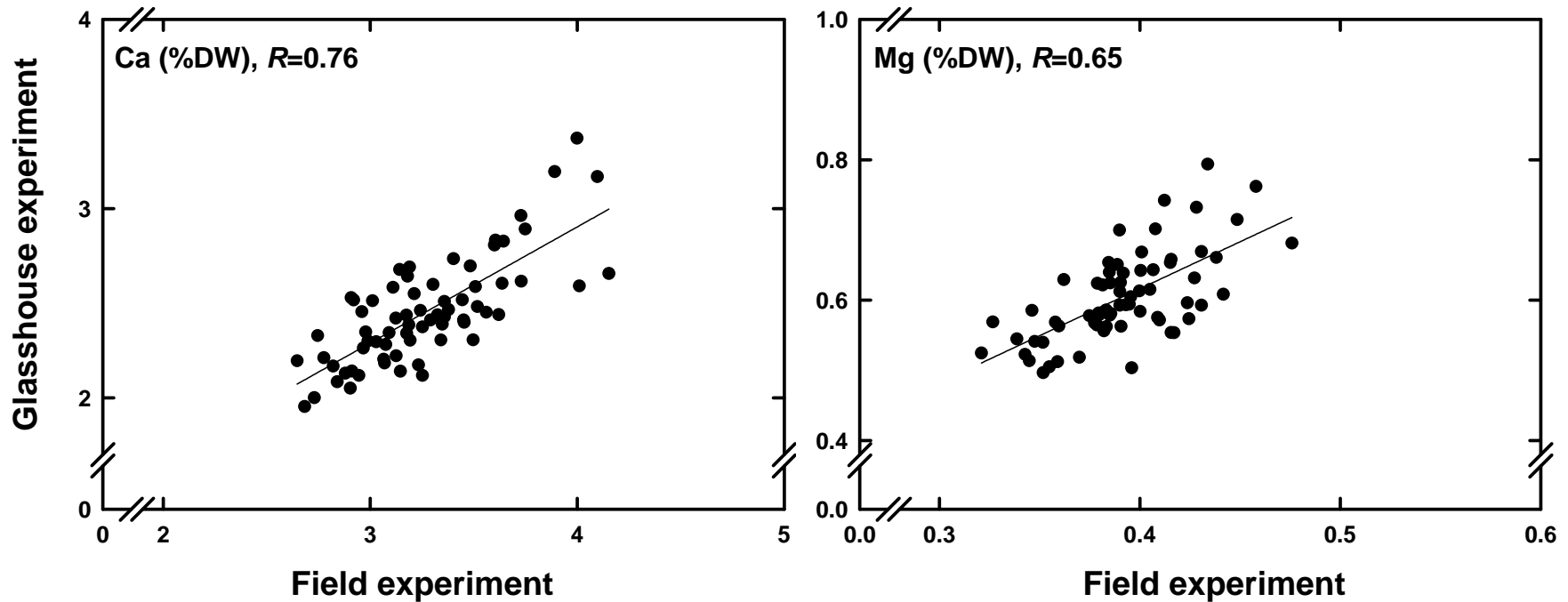
18.1 Mt yr⁻¹ “cauliflowers and broccoli”



***Brassica* crops are ideal calcium biofortification targets: human health, agronomic and genetic reasons**



Vegetable *Brassica* are Ca/Mg biofortification targets: dietary, evolutionary and genetic reasons



F_1 hybrids in field vs glasshouse ($P<0.0001$)

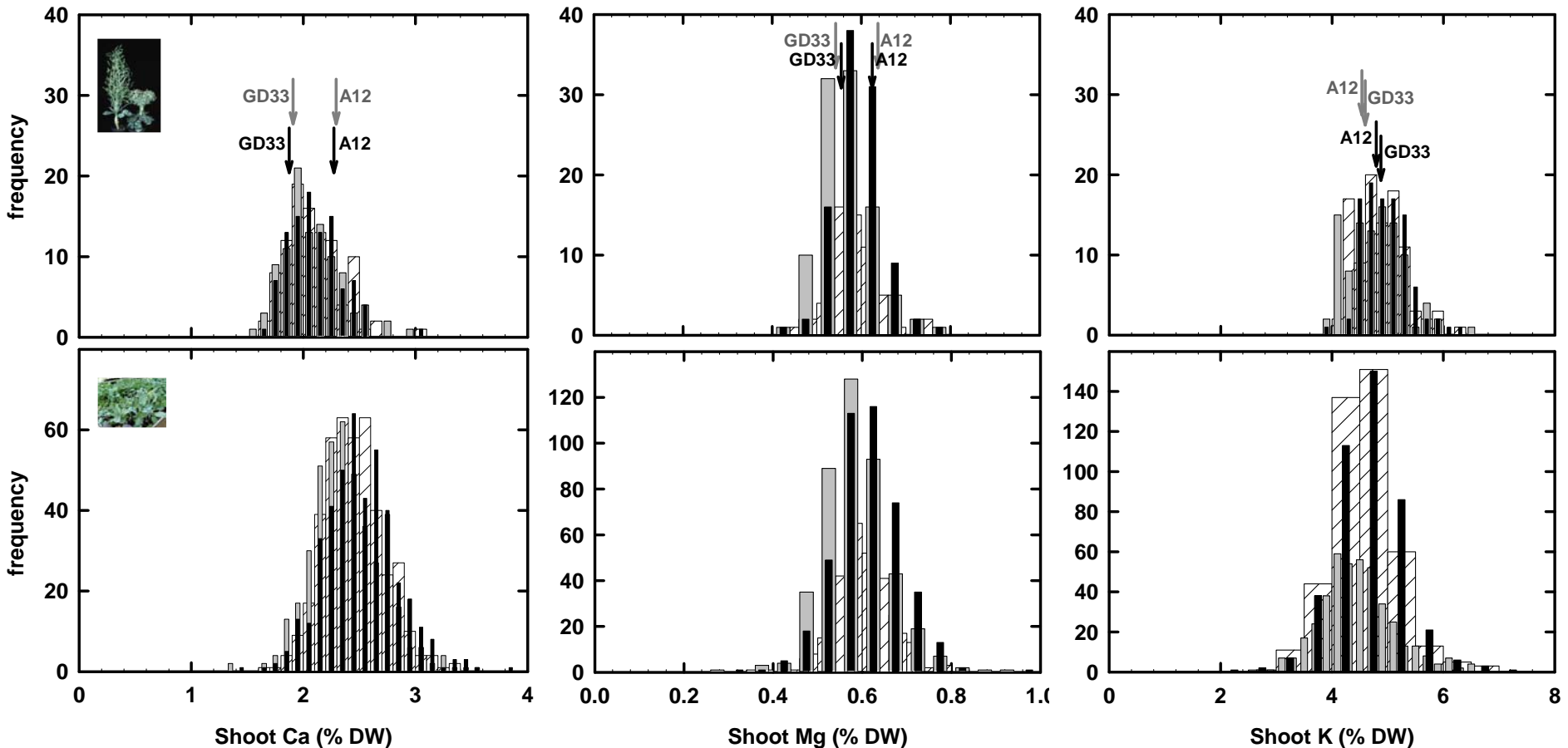
Vegetable *Brassica* are Ca/Mg biofortification targets: dietary, evolutionary and genetic reasons

Variance component	Ca	Mg	K	P	Zn	Fe
Genotype (V_A)	36.0	37.7	22.2	7.4	18.5	7.1
$[P]_{\text{ext}}$	0.2	4.0	2.2	43.1	7.2	3.5
$[P]_{\text{ext}} /$ genotype	1.4	1.1	1.4	0.5	2.5	0.0
'other'	62.4	57.2	74.2	49.0	71.8	89.4



High heritability in AG population

Vegetable *Brassica* are Ca/Mg biofortification targets: dietary, evolutionary and genetic reasons

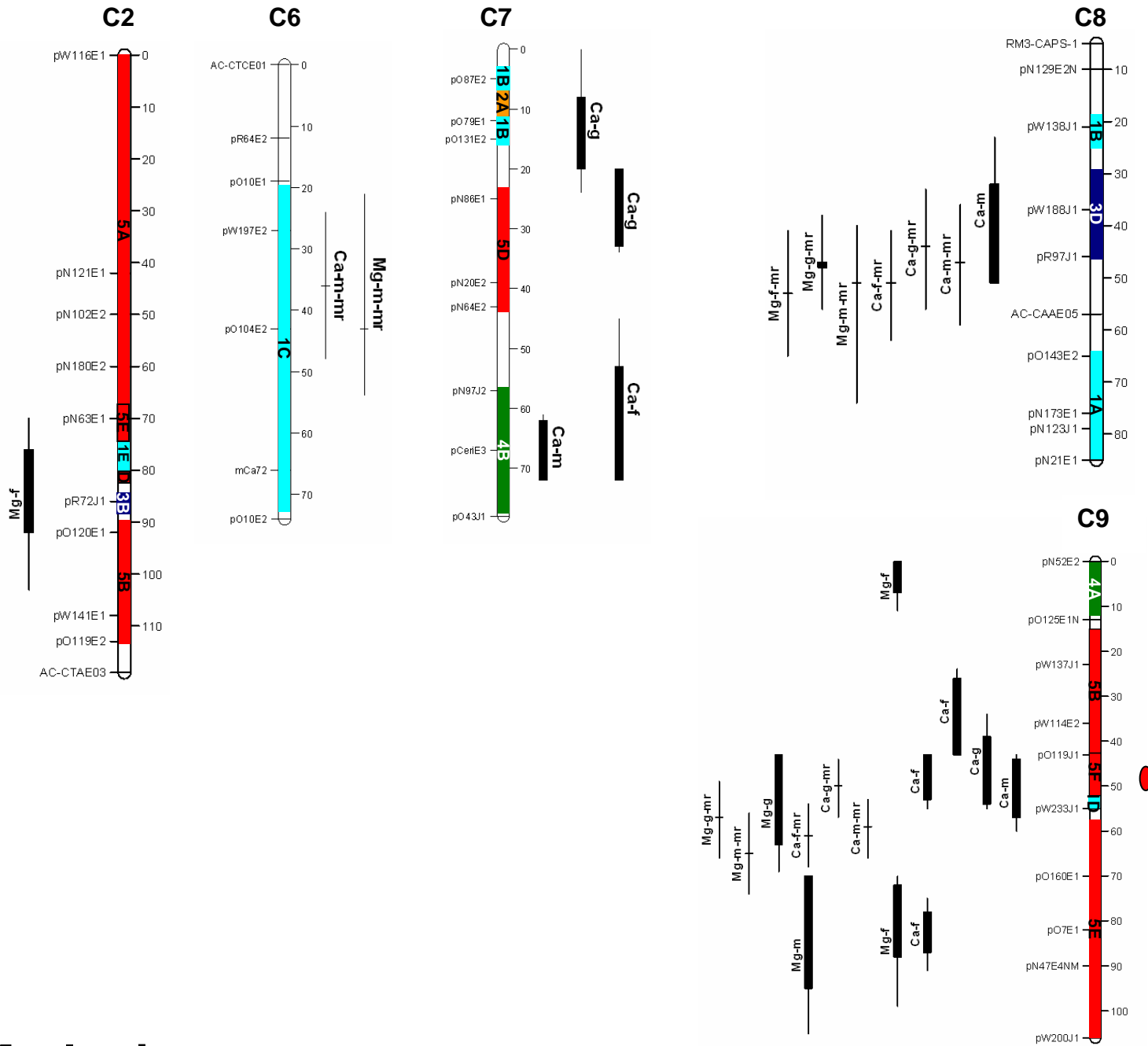


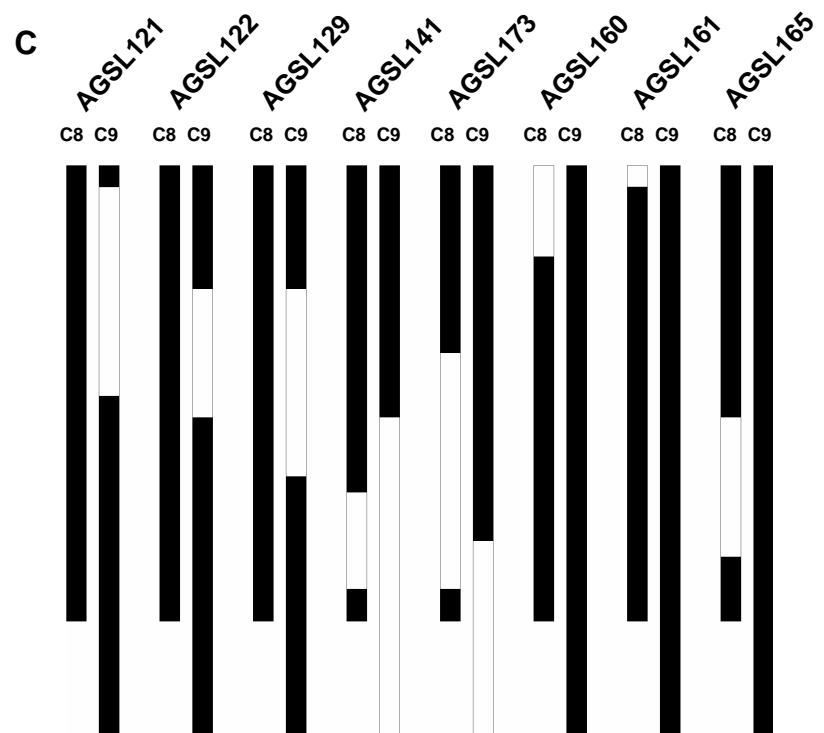
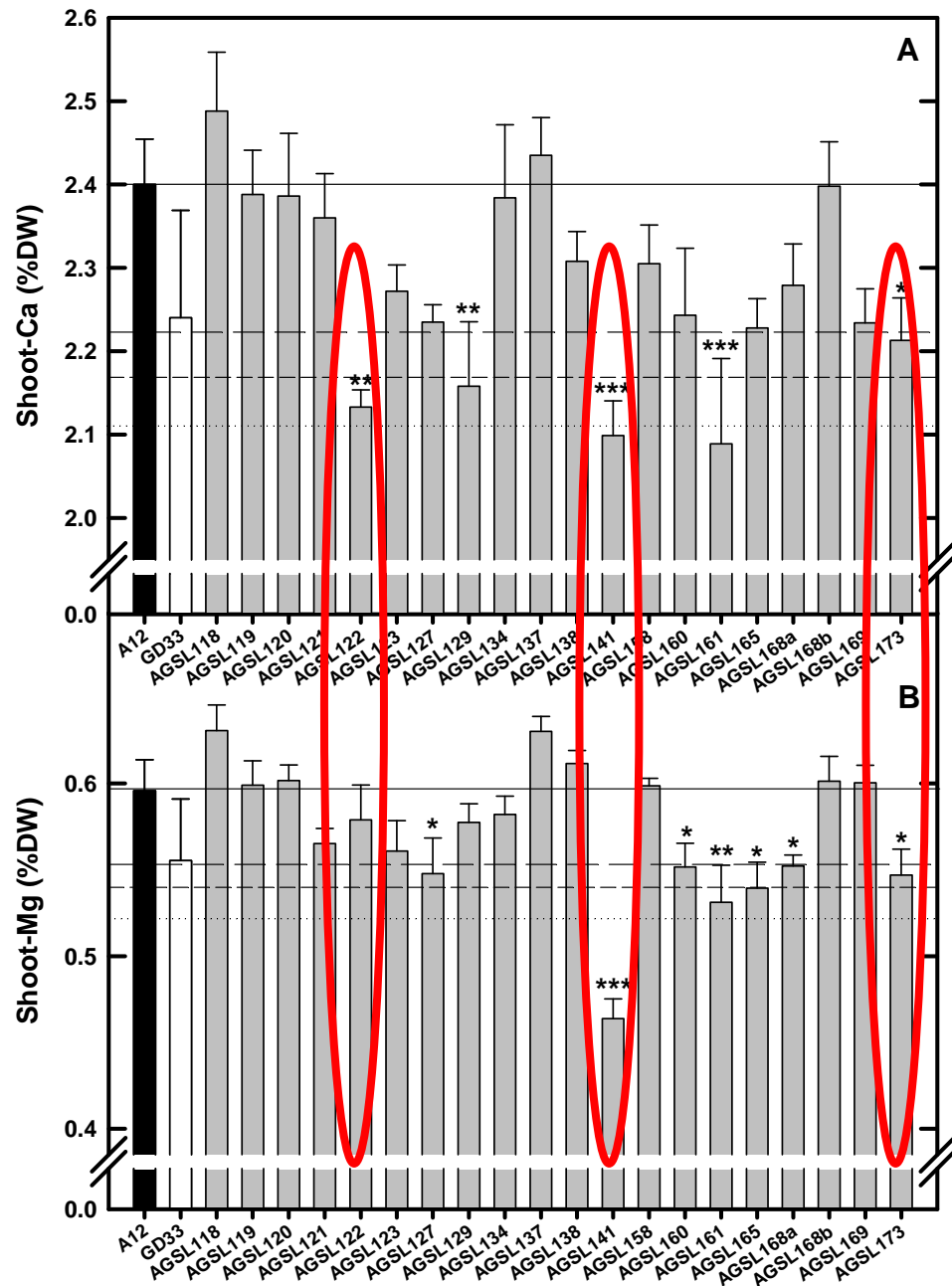
 All soils

 Low nutrient soil

 High nutrient soil

Ca/Mg-loci





Ongoing work

B_1F_2 of AGSLs 122, 141, 173 in prep. (for fine-mapping C9, C8, C6 loci)

Integrate eQTL, CaQTL and MgQTL (C- + A-genome ... AG / BraIRRI S₈s)

Characterise candidates in new A-genome TILLING population

Ongoing characterisation of divalent cation transporters: BBSRC Crop Science Priority Studentship (Seosamh Ó Lochlainn)

