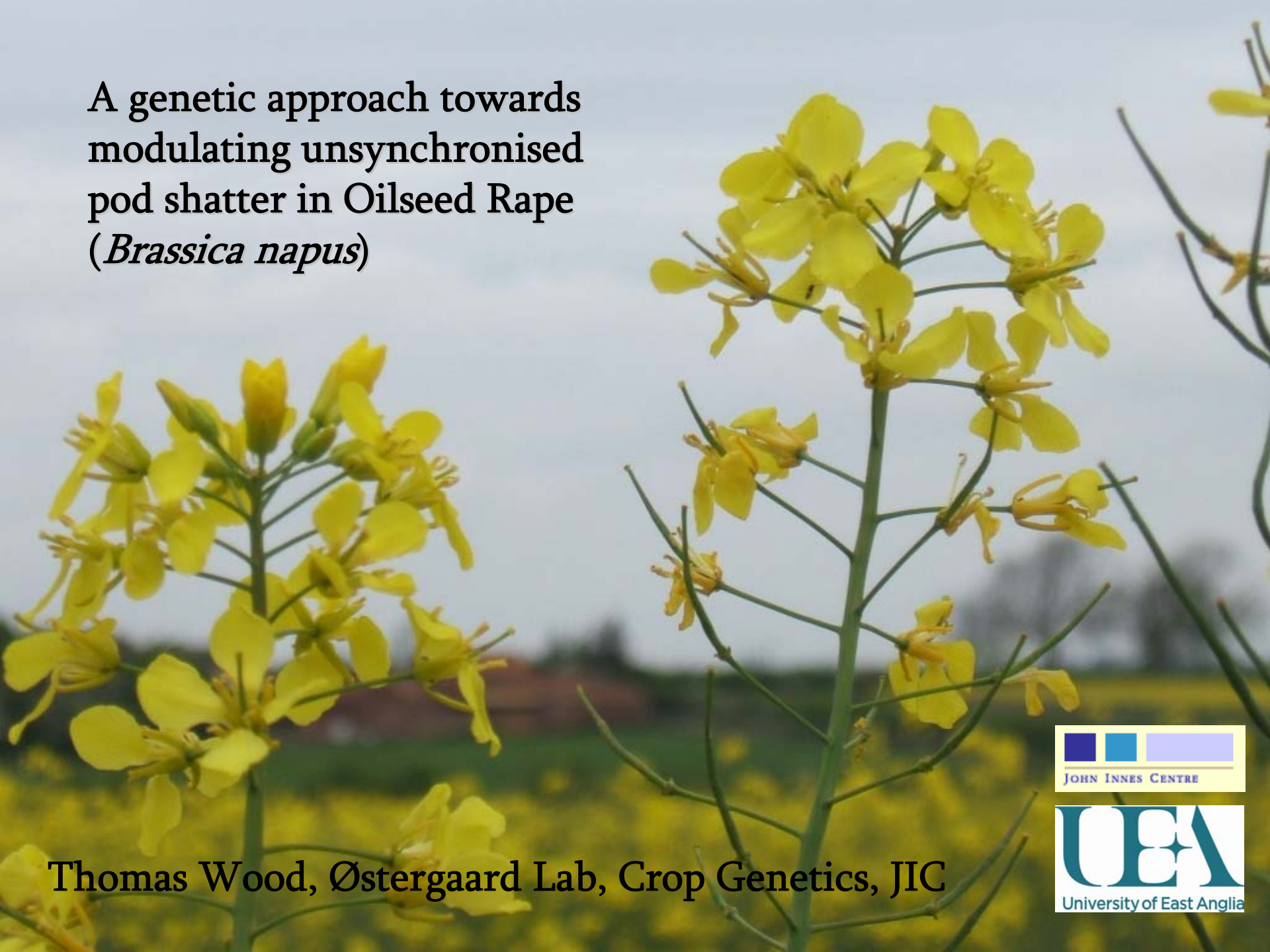


A genetic approach towards
modulating unsynchronised
pod shatter in Oilseed Rape
(*Brassica napus*)



Thomas Wood, Østergaard Lab, Crop Genetics, JIC



Pod shatter in *Brassica napus*

Ave. 10% loss (>75%)

Volunteer contamination

Swathing, Desiccants

Lack of resistant varieties



POSH 1-3

DH Mapping Population

Segregates for Pod Shatter Resistance (PSR)

Multiple Determinants

Aim:

- Improvement of Linkage Map
- QTL Identification
- Differences in Pod Physiology

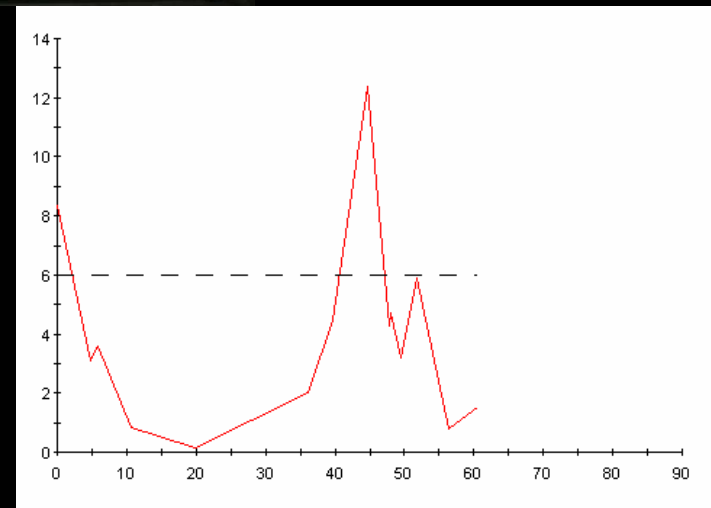
Investigating factors regulating PSR

Physical Analysis:

- Randomised Impact Test
- Sectioning/Microscopy

Mapping:

- 200 loci genotyped
- Candidate Markers
- 2 QTL associated with PSR identified



POSH Marker Analysis (KW)

Thanks !

Acknowledgments:

- Østergaard Lab
- Bancroft Group
- Judith Irwin
- Dean Group
- Peter Werner, KWS



Progress curve for 20 pods samples, Susceptible & Resistant POSH lines, 0 - 1040s

